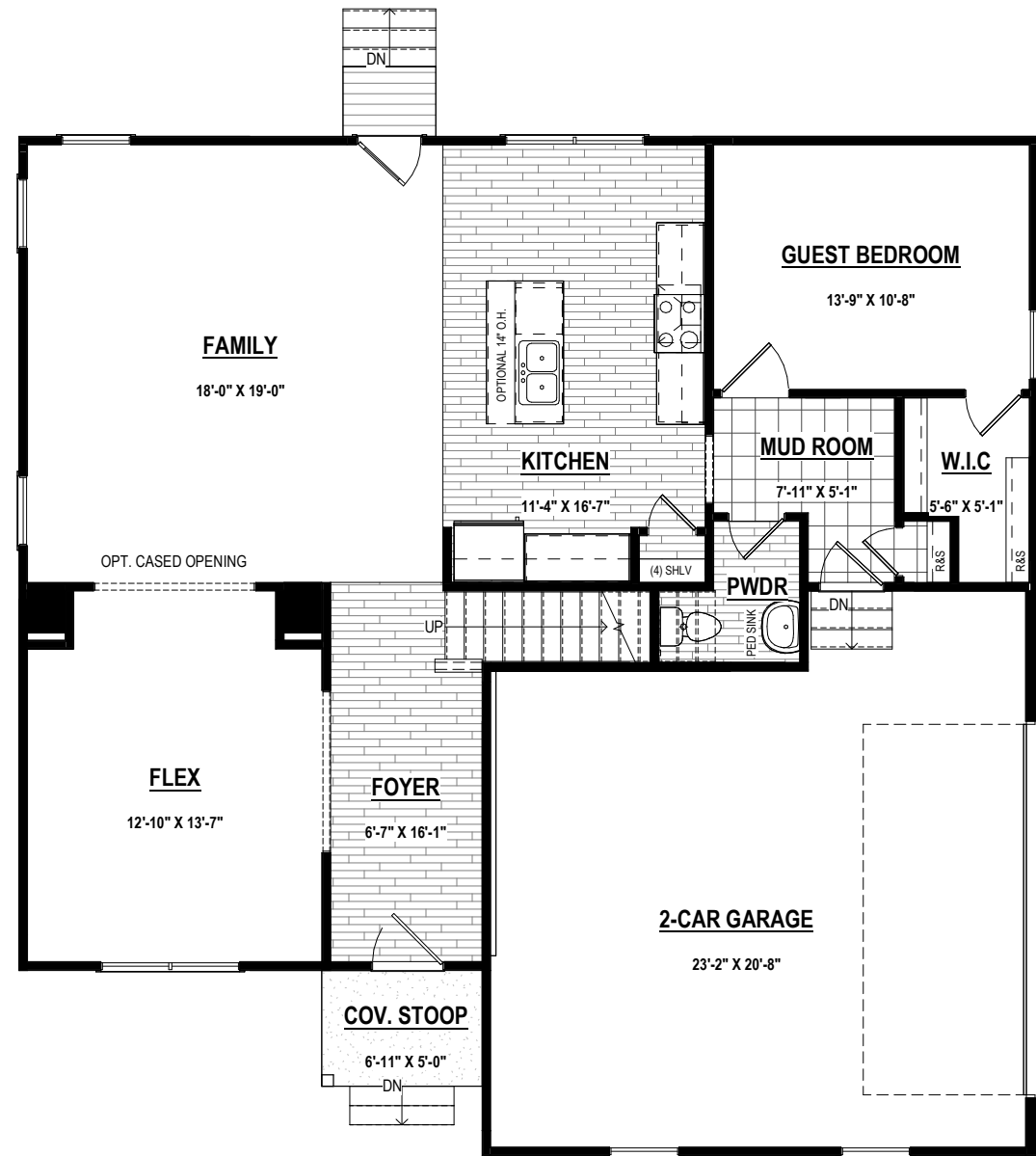


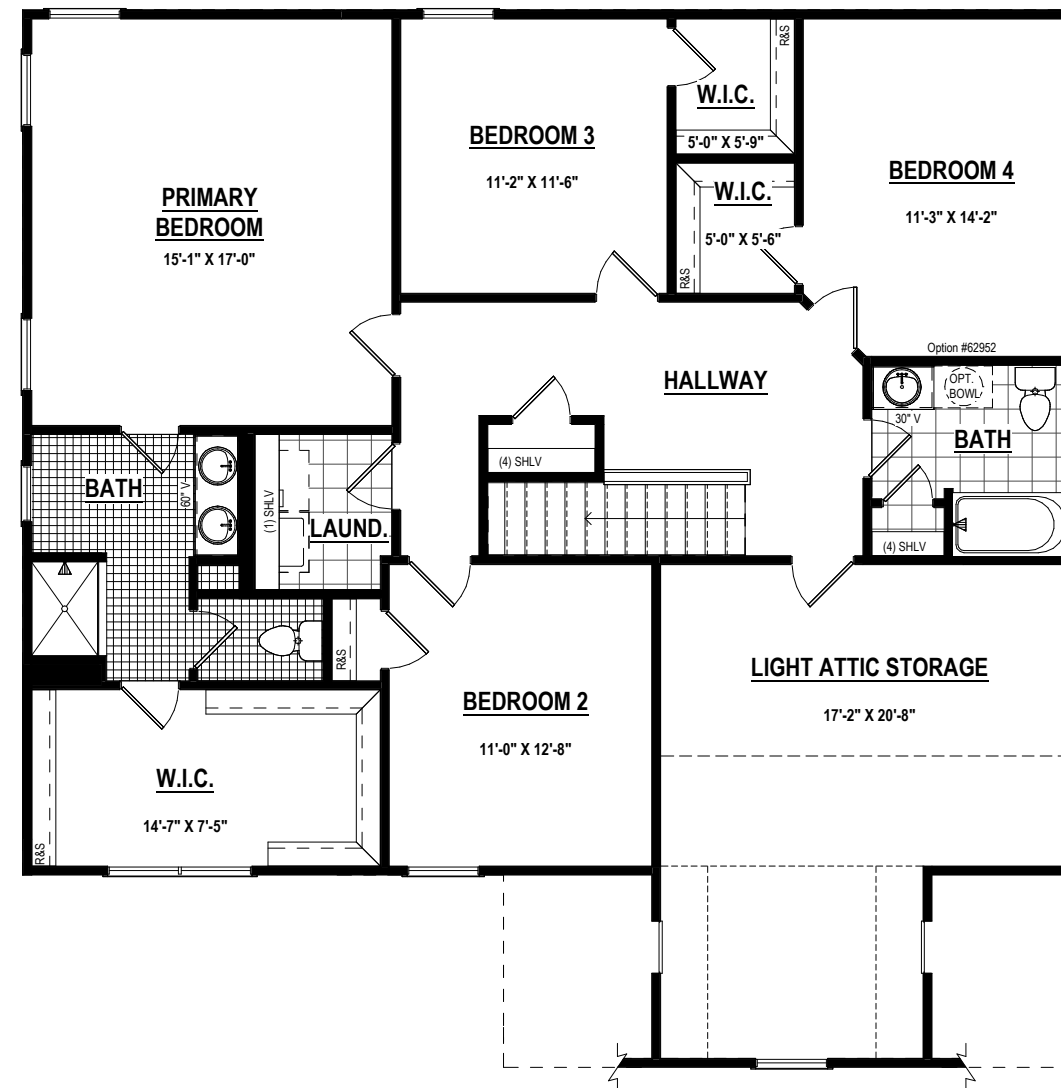
THE CORDOVA

BRICKSHIRE

07.20.2023



FIRST FLOOR PLAN



SECOND FLOOR PLAN

- Carpet Vinyl Tile Hardwood

Specifications
 5 Bedrooms
 2 & 1/2 Baths

First Floor: 1,241 s.f. ±
 Second Floor: 1,358 s.f. ±
Total: 2,599 s.f. ±

SHURM HOMES

9205 Atlee Branch La. Mechanicsville, VA 23116
 Phone: 804.723.5287 Fax: 804.789.8431
 shurmhomes.com

THESE DRAWINGS ARE THE PROPERTY OF SHURM HOMES®
 REPRODUCTION AND/OR COPIES OF THESE DRAWINGS
 WITHOUT PERMISSION FROM SHURM HOMES® IS NOT
 PERMITTED. DOING SO WILL RESULT IN INFRINGEMENT.

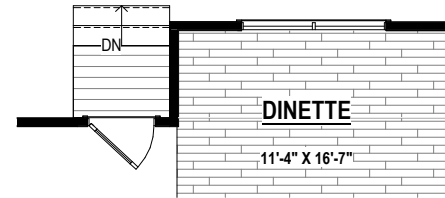
THESE DRAWINGS ARE ONLY A REPRESENTATION.
 FINAL DESIGN AND/OR SQUARE FOOTAGES MAY
 CHANGE WITHOUT NOTICE. ALL INFORMATION
 DEEMED RELIABLE BUT NOT GUARANTEED.

THE CORDOVA

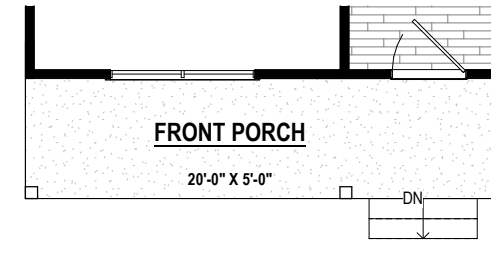
BRICKSHIRE

07.20.2023

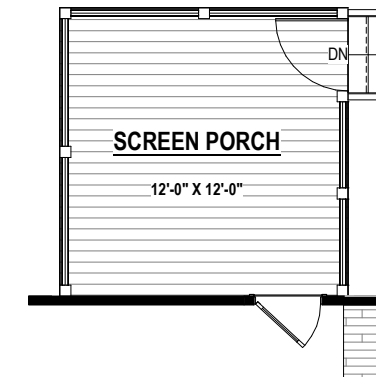
FIRST FLOOR OPTIONS



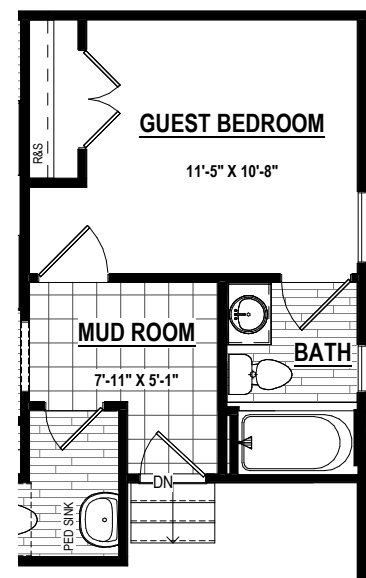
DINETTE EXTENSION
(48 SF ±)
8'-0" Option #15125
9'-0" Option #15126



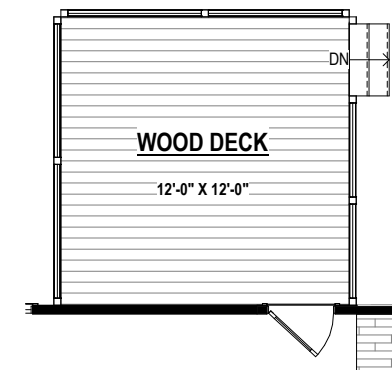
FULL FRONT PORCH
(104 SF ±)
Masonry Option #15240



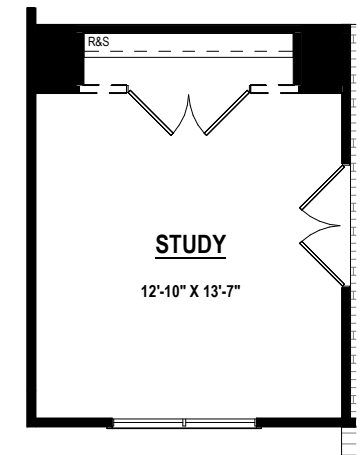
SCREEN PORCH
(144 SF ±)
Option #15501



FULL GUEST BATH
8'-0" Option #15095
9'-0" Option #15096



WOOD DECK
(144 SF ±)
Option #15001



OFFICE IN LIEU OF FLEX
W/ OPTIONAL CLOSET
8'-0" Option #15115
9'-0" Option #15114

SHURM HOMES

9205 Atlee Branch La. Mechanicsville, VA 23116
Phone: 804.723.5287 Fax: 804.789.8431
shurmhomes.com

THESE DRAWINGS ARE THE PROPERTY OF SHURM HOMES®
REPRODUCTION AND/OR COPIES OF THESE DRAWINGS
WITHOUT PERMISSION FROM SHURM HOMES® IS NOT
PERMITTED. DOING SO WILL RESULT IN INFRINGEMENT.

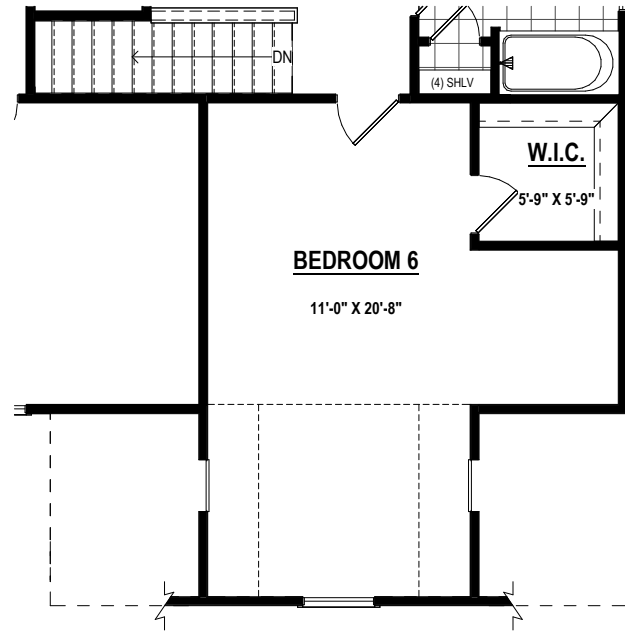
THESE DRAWINGS ARE ONLY A REPRESENTATION.
FINAL DESIGN AND/OR SQUARE FOOTAGES MAY
CHANGE WITHOUT NOTICE. ALL INFORMATION
DEEMED RELIABLE BUT NOT GUARANTEED.

THE CORDOVA

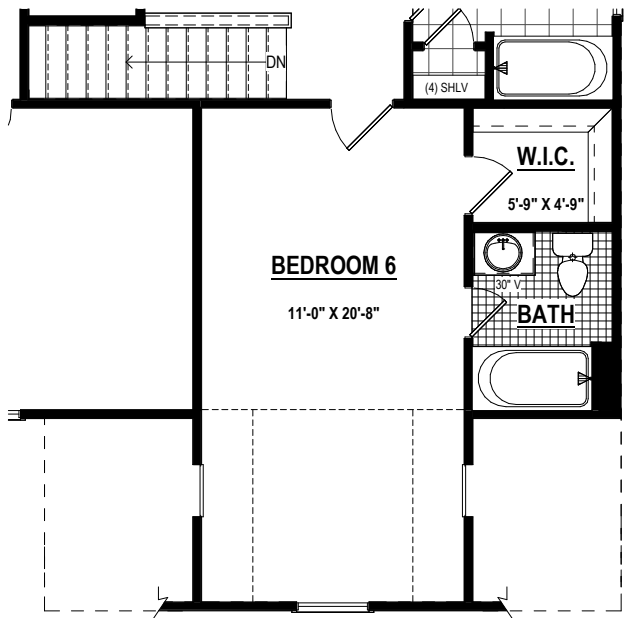
BRICKSHIRE

07.20.2023

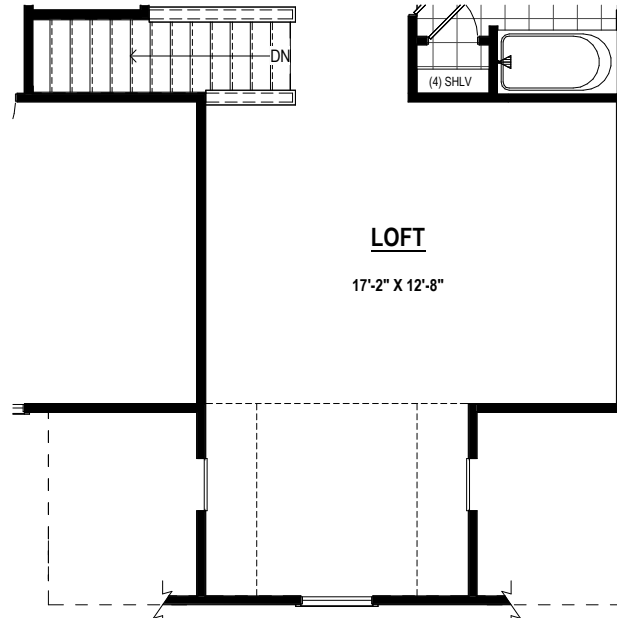
SECOND FLOOR OPTIONS



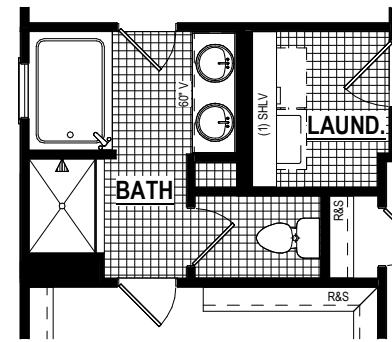
BEDROOM 6
(325 SF ±)
Option #15204



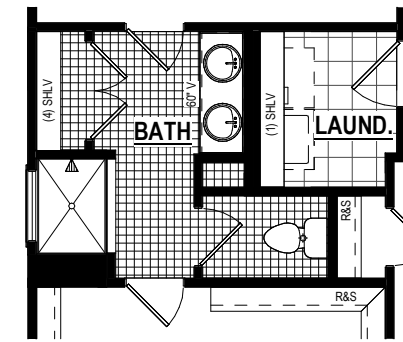
BEDROOM 6 W/ FULL BATH
(325 SF ±)
Option #15213



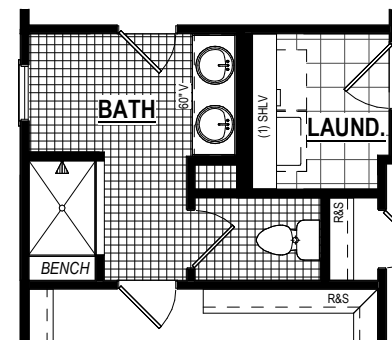
FINISHED LOFT OVER GARAGE
(325 SF ±)
Option #15203



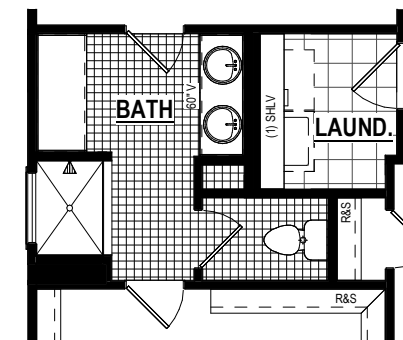
PRIMARY BATH
W/ SOAKING TUB
Option #41150



PRIMARY BATH
W/ LINEN CLOSET
Option #15051



PRIMARY BATH
W/ SHOWER BENCH
Option #65025



PRIMARY BATH
W/ MAKEUP VANITY
Option #60905

SHURM HOMES

9205 Atlee Branch La. Mechanicsville, VA 23116
Phone: 804.723.5287 Fax: 804.789.8431
shurmhomes.com

THESE DRAWINGS ARE THE PROPERTY OF SHURM HOMES®
REPRODUCTION AND/OR COPIES OF THESE DRAWINGS
WITHOUT PERMISSION FROM SHURM HOMES® IS NOT
PERMITTED. DOING SO WILL RESULT IN INFRINGEMENT.

THESE DRAWINGS ARE ONLY A REPRESENTATION.
FINAL DESIGN AND/OR SQUARE FOOTAGES MAY
CHANGE WITHOUT NOTICE. ALL INFORMATION
DEEMED RELIABLE BUT NOT GUARANTEED.

THE CORDOVA

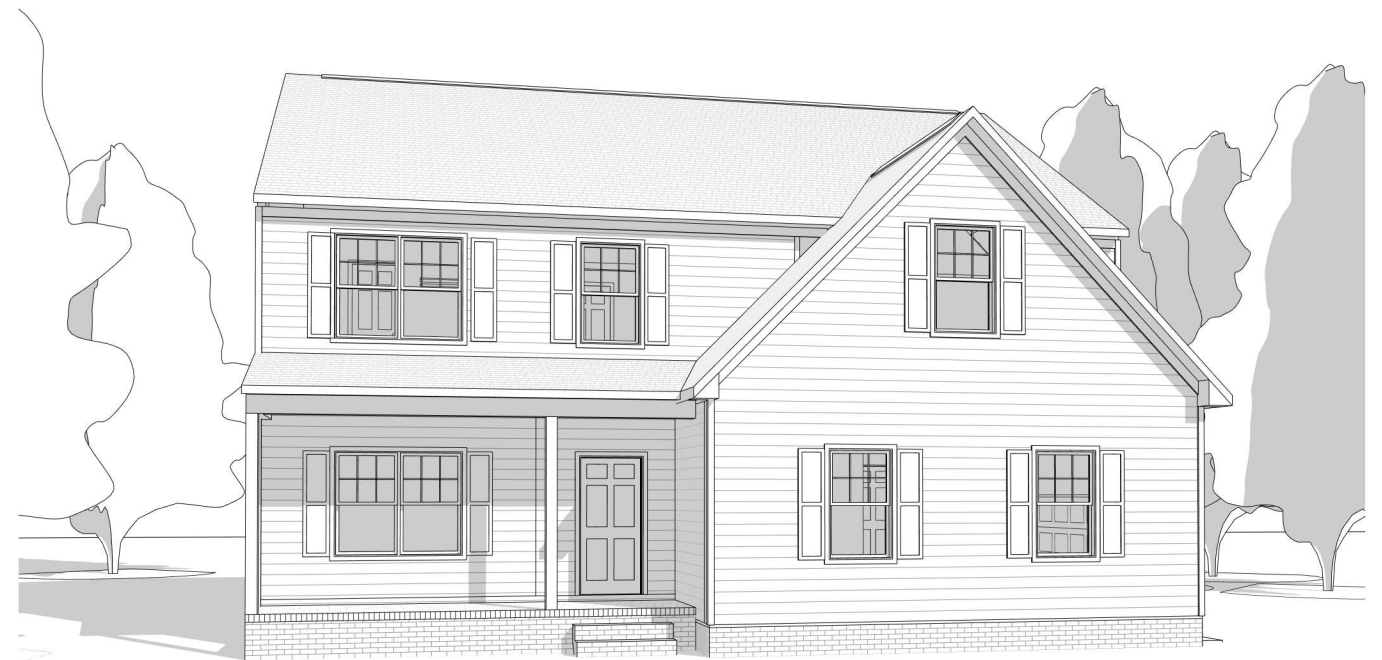
BRICKSHIRE

07.20.2023

TRADITIONAL ELEVATION



TRADITIONAL (BASE)



FRONT PORCH

Option #15240

SHURM  HOMES®

9205 Atlee Branch La. Mechanicsville, VA 23116
Phone: 804.723.5287 Fax: 804.789.8431
shurmhomes.com

THESE DRAWINGS ARE THE PROPERTY OF SHURM HOMES®
REPRODUCTION AND/OR COPIES OF THESE DRAWINGS
WITHOUT PERMISSION FROM SHURM HOMES® IS NOT
PERMITTED. DOING SO WILL RESULT IN INFRINGEMENT.

THESE DRAWINGS ARE ONLY A REPRESENTATION.
FINAL DESIGN AND/OR SQUARE FOOTAGES MAY
CHANGE WITHOUT NOTICE. ALL INFORMATION
DEEMED RELIABLE BUT NOT GUARANTEED.

THE CORDOVA

BRICKSHIRE

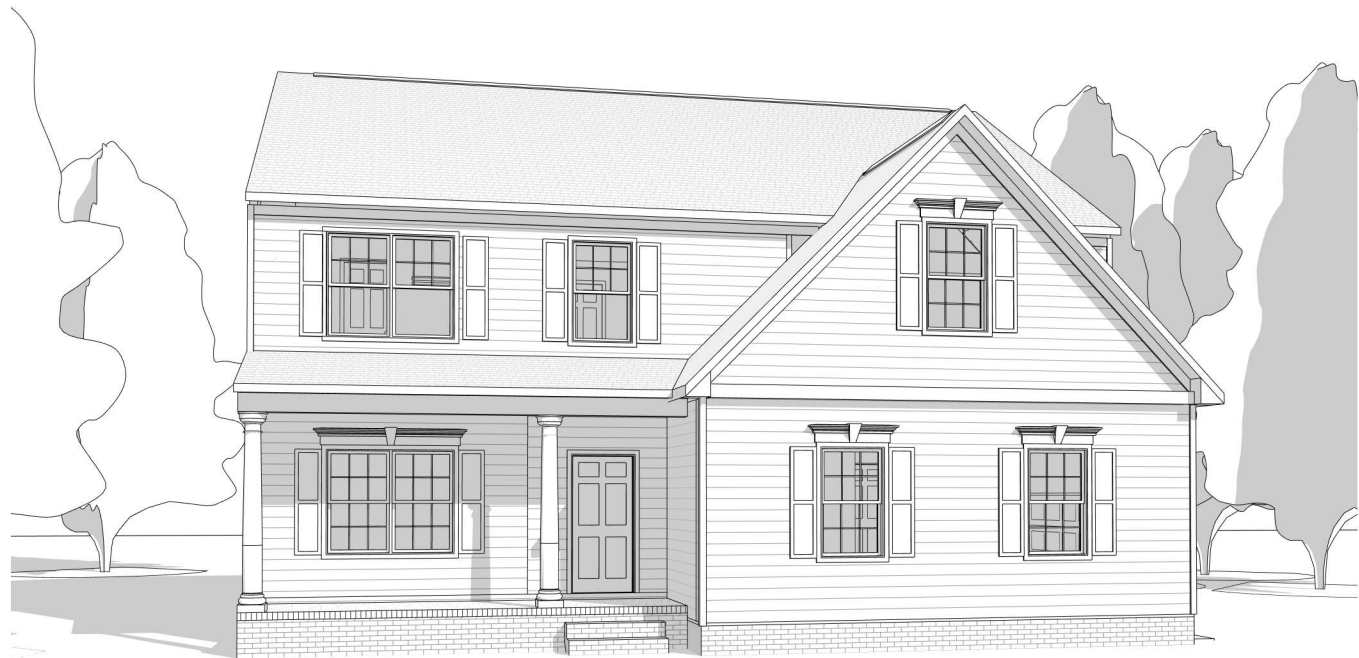
07.20.2023

COLONIAL ELEVATION



COLONIAL (BASE)

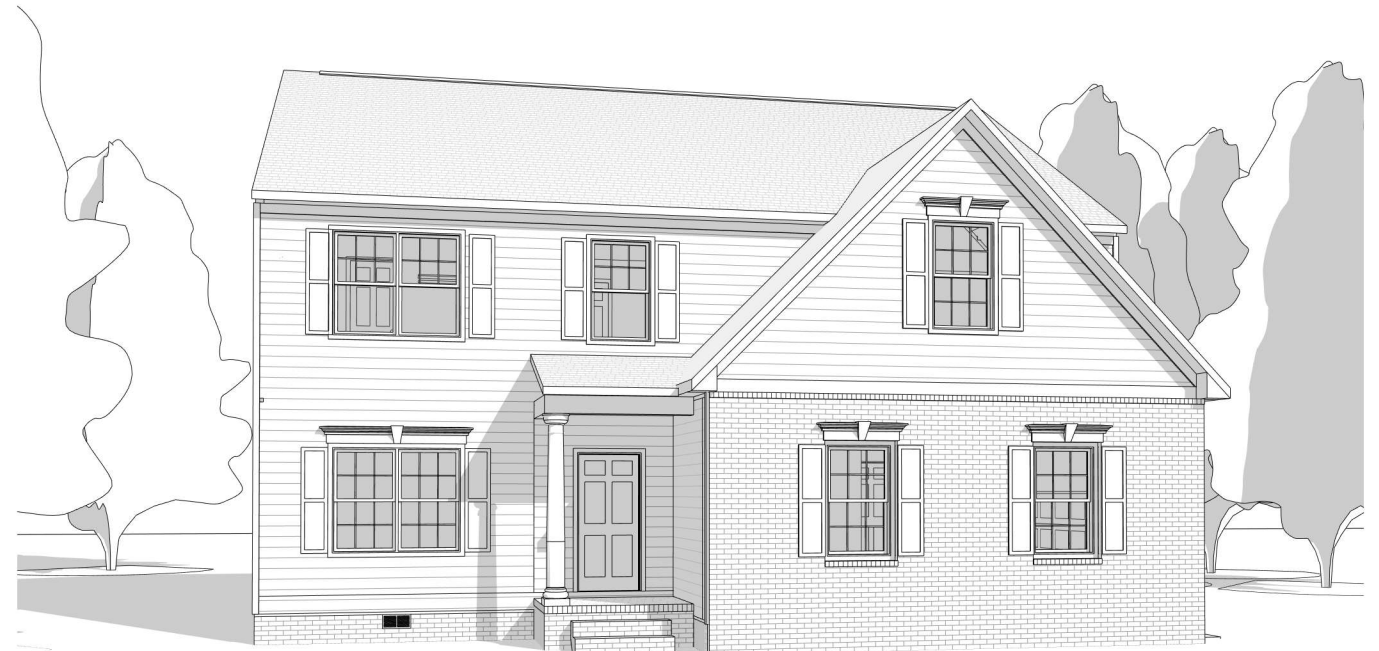
Option #00150



FRONT PORCH

Masonry Option #15240

10" Round Column Option #10510



SIDE-LOAD GARAGE W/ OPTIONAL BRICK

8'-0" Option #15250

9'-0" Option #15259

SHURM  HOMES®

9205 Atlee Branch La. Mechanicsville, VA 23116
Phone: 804.723.5287 Fax: 804.789.8431
shurmhomes.com

THESE DRAWINGS ARE THE PROPERTY OF SHURM HOMES®
REPRODUCTION AND/OR COPIES OF THESE DRAWINGS
WITHOUT PERMISSION FROM SHURM HOMES® IS NOT
PERMITTED. DOING SO WILL RESULT IN INFRINGEMENT.

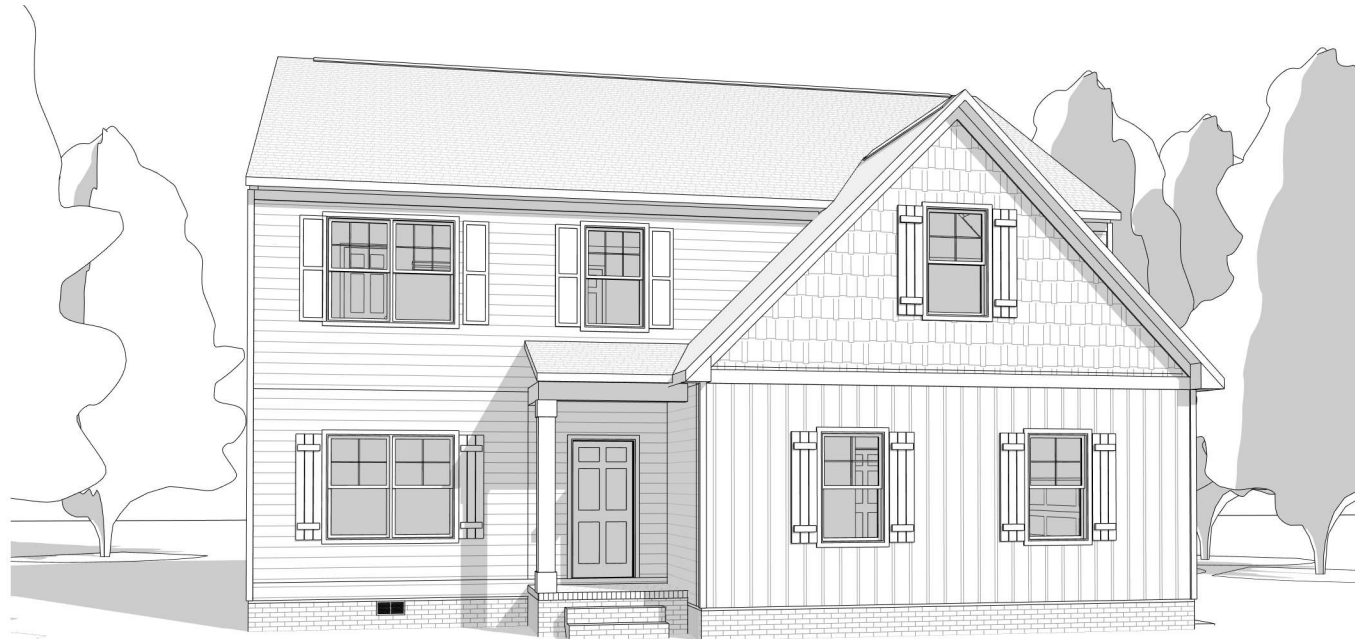
THESE DRAWINGS ARE ONLY A REPRESENTATION.
FINAL DESIGN AND/OR SQUARE FOOTAGES MAY
CHANGE WITHOUT NOTICE. ALL INFORMATION
DEEMED RELIABLE BUT NOT GUARANTEED.

THE CORDOVA

BRICKSHIRE

07.20.2023

CRAFTSMAN ELEVATION



CRAFTSMAN (BASE)

Option #00145



FRONT PORCH W/ OPTIONAL STONE

Masonry Option #15240
10" Square Column Option #10511
Stone Facade Custom Option



SIDE-LOAD GARAGE W/ OPTIONAL STONE PIERS

8'-0" Option #15251
9'-0" Option #15258
Half Stone Column Custom Option

SHURM HOMES

9205 Atlee Branch La. Mechanicsville, VA 23116
Phone: 804.723.5287 Fax: 804.789.8431
shurmhomes.com

THESE DRAWINGS ARE THE PROPERTY OF SHURM HOMES®
REPRODUCTION AND/OR COPIES OF THESE DRAWINGS
WITHOUT PERMISSION FROM SHURM HOMES® IS NOT
PERMITTED. DOING SO WILL RESULT IN INFRINGEMENT.

THESE DRAWINGS ARE ONLY A REPRESENTATION.
FINAL DESIGN AND/OR SQUARE FOOTAGES MAY
CHANGE WITHOUT NOTICE. ALL INFORMATION
DEEMED RELIABLE BUT NOT GUARANTEED.

THE CORDOVA

BRICKSHIRE

02.14.2023

FARMHOUSE ELEVATION



FARMHOUSE (BASE)



FRONT PORCH

Masonry Option #15240
8" Wood Column Option #10512

SHURM  HOMES®

9205 Atlee Branch La. Mechanicsville, VA 23116
Phone: 804.723.5287 Fax: 804.789.8431
shurmhomes.com

THESE DRAWINGS ARE THE PROPERTY OF SHURM HOMES®
REPRODUCTION AND/OR COPIES OF THESE DRAWINGS
WITHOUT PERMISSION FROM SHURM HOMES® IS NOT
PERMITTED. DOING SO WILL RESULT IN INFRINGEMENT.

THESE DRAWINGS ARE ONLY A REPRESENTATION.
FINAL DESIGN AND/OR SQUARE FOOTAGES MAY
CHANGE WITHOUT NOTICE. ALL INFORMATION
DEEMED RELIABLE BUT NOT GUARANTEED.