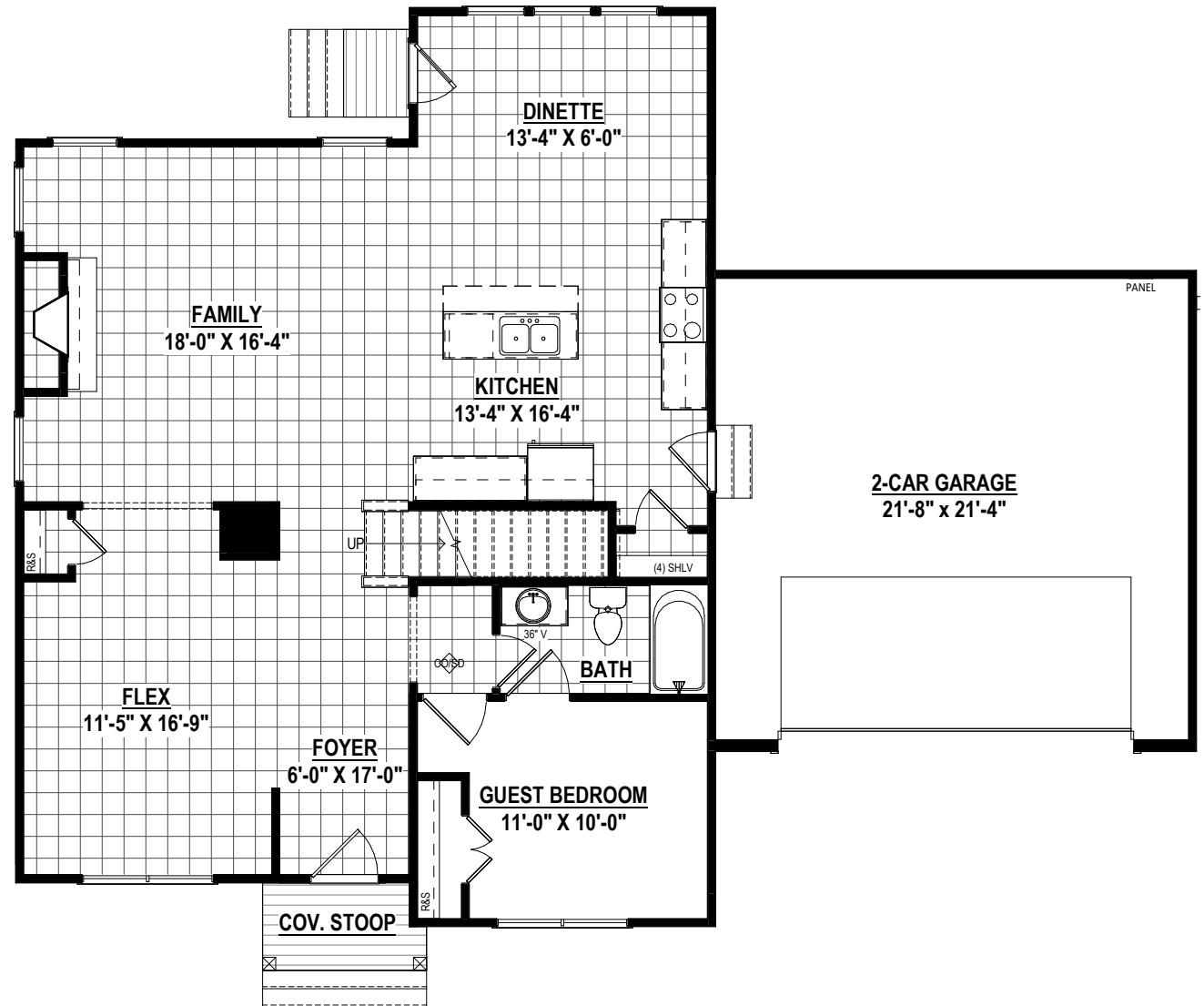


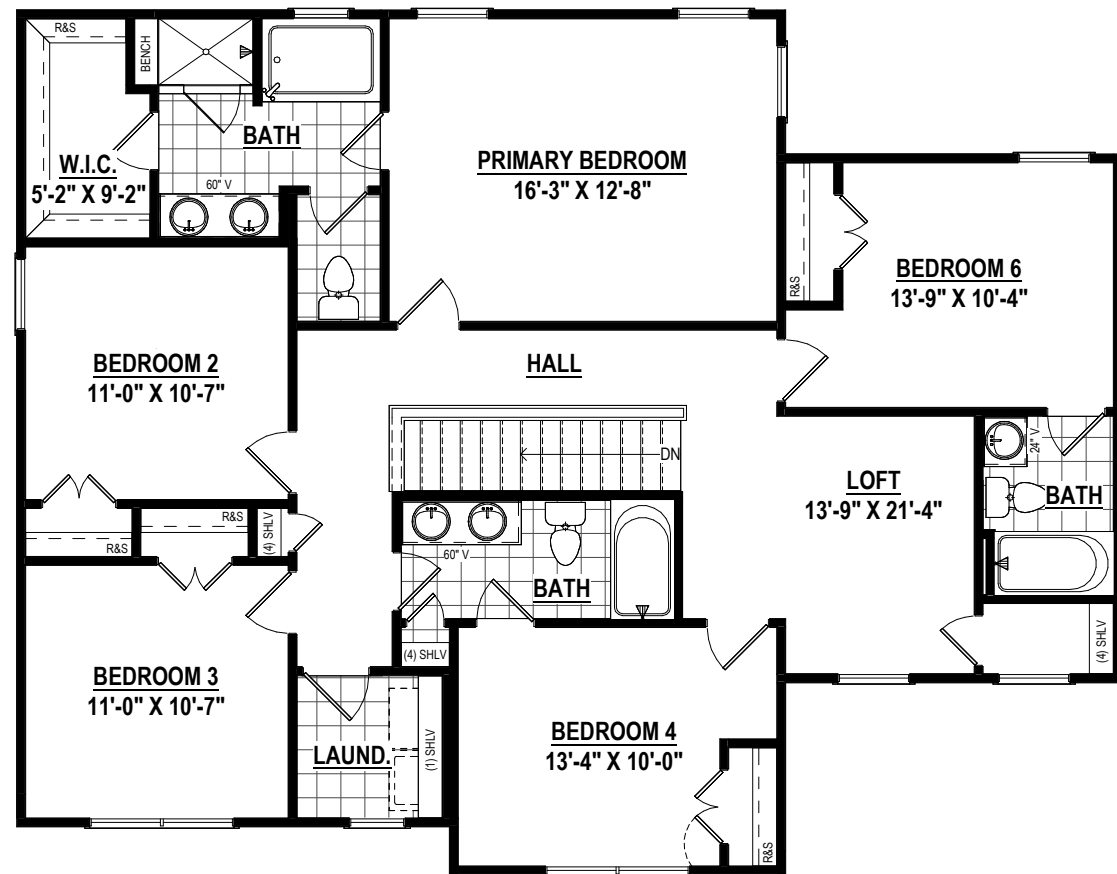
THE POTOMAC

POPLAR VILLAGE - LOT 32

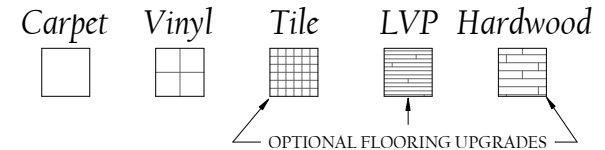
07.19.2024



FIRST FLOOR PLAN



SECOND FLOOR PLAN



Specifications
6- Bedrooms
4 Baths

First Floor: 1,200 s.f. ±
Second Floor: 1,424 s.f. ±
Total: 2,624 s.f. ±

SHURM HOMES

9205 Atlee Branch La. Mechanicsville, VA 23116
Phone: 804.723.5287 Fax: 804.789.8431
shurmhomes.com

THESE DRAWINGS ARE THE PROPERTY OF SHURM HOMES®. REPRODUCTION AND/OR COPIES OF THESE DRAWINGS WITHOUT PERMISSION FROM SHURM HOMES® IS NOT PERMITTED. DOING SO WILL RESULT IN INFRINGEMENT.

THESE DRAWINGS ARE ONLY A REPRESENTATION. FINAL DESIGN AND/OR SQUARE FOOTAGES MAY CHANGE WITHOUT NOTICE. ALL INFORMATION DEEMED RELIABLE BUT NOT GUARANTEED.